

GREAT GREY OWL

(*STRIX NEBULOSA*)

CONSERVATION STATUS: LEAST CONCERN*



WE ARE BIRDS

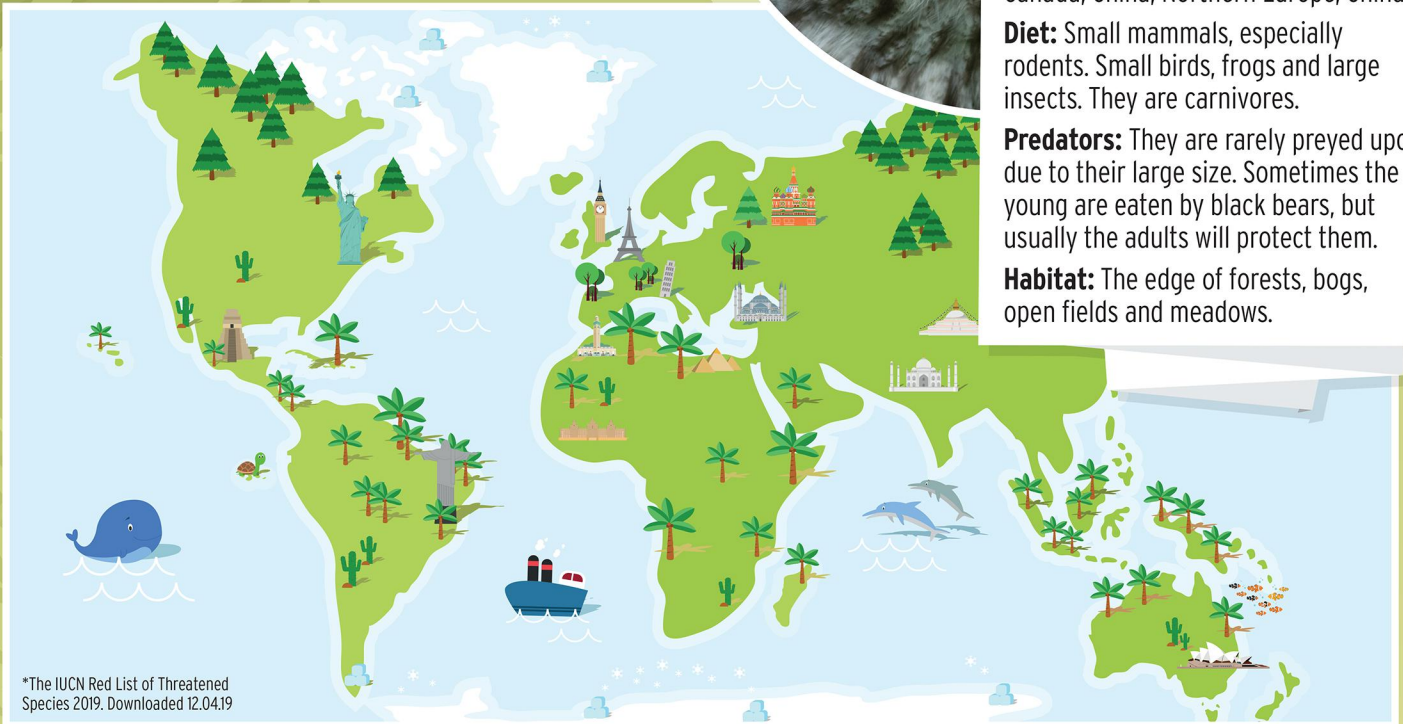
with a lifespan of up to 40 years in captivity, up to 27 years in the wild

Origin: Northern Hemisphere (America, Canada, China, Northern Europe, China).

Diet: Small mammals, especially rodents. Small birds, frogs and large insects. They are carnivores.

Predators: They are rarely preyed upon due to their large size. Sometimes the young are eaten by black bears, but usually the adults will protect them.

Habitat: The edge of forests, bogs, open fields and meadows.



*The IUCN Red List of Threatened Species 2019. Downloaded 12.04.19



Height

57-67cm



Weight Males

568-1110g

Weight Females

977-1900g

DID YOU KNOW?

Great Grey Owls hunt from their perch. They use their excellent hearing to listen carefully and watch the ground and can detect prey from up to 100 meters away. They then silently fly and swoop down to catch their prey.

They often call out to mark their territory and can be heard from up to 800m away.

They swallow small prey whole.

They hunt at night between dusk and dawn.

GET UP CLOSE AND FIND OUT MORE ABOUT THESE AMAZING BIRDS BY BOOKING AN OWL EXPERIENCE!

ADAPTATIONS

Their hairy feet protects them from the cold climates and helps them power through the snow to find their prey. Great Grey Owls have fantastic hearing. They can even hear prey as deep as 45cm underneath the snow and are able to dive through the snow to get to it.

REPRODUCTION

2-9 eggs are laid. They take 28-36 days to hatch. The young leave their nests, still unable to fly, at 25-30 days old. They learn to fly around 2-3 weeks later, but in the meantime climb up leaning trees.

PLEASE DO NOT FEED THE OWLS