

# AYLESBURY DUCKS

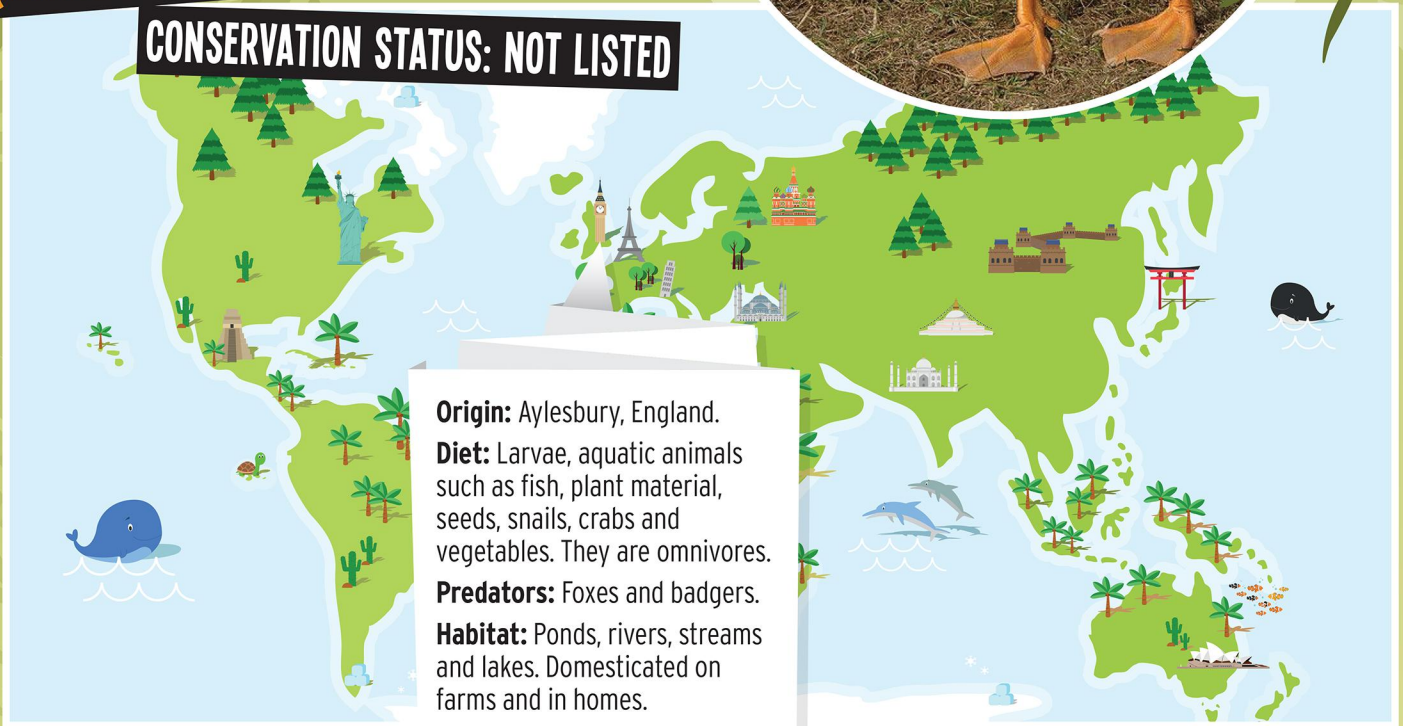
(ANAS PLATYRHYNCHOS DOMESTICUS)

CONSERVATION STATUS: NOT LISTED



WE ARE  
BIRDS

with a lifespan of  
up to 10 years



**Origin:** Aylesbury, England.

**Diet:** Larvae, aquatic animals such as fish, plant material, seeds, snails, crabs and vegetables. They are omnivores.

**Predators:** Foxes and badgers.

**Habitat:** Ponds, rivers, streams and lakes. Domesticated on farms and in homes.

## DID YOU KNOW?

Females are known as ducks or hens, males are known as drakes.

Aylesbury ducks are friendly natured, slow moving, flightless ducks. They make excellent pets.

In the 18th Century, Aylesbury ducks were walked 40 miles to the markets in London. They stopped at inns each night where they were provided with large enclosed yards in exchange for a few birds. Each morning the ducks were walked across a shallow ditch filled with cold tarry solution, which made their feet sticky, then through sawdust. This protected their feet for the long walk to be sold at the market.

## ADAPTATIONS

Instead of teeth, ducks have serrations (saw-like edges) on their bills that allow them to filter food out of the water. They have webbed feet to act like paddles helping them to swim. They have very good, coloured vision, enabling them to see underwater. They have no nerves or blood vessels in their feet, meaning they can swim in freezing cold water without feeling a thing. Their feathers are nearly 100% waterproof and even when they dive under the surface of the water, their underneath feathers remain completely dry.

## REPRODUCTION

Females lay 35-125 eggs per year. Fertilised eggs hatch after around 28 days of incubating. Male ducks will guard the nest and chase off potential predators. Aylesbury ducks are precocial. This means they hatch with their eyes open, a covering of hair and are able to leave the nest within just a few hours.

## KEEPER NOTES

You may also see some wild ducks visiting our pond. They are Mallards. The females are mottled brown and the males have green heads with a bright yellow bill.

YOU CAN BUY FARM FOOD FROM THE ENTRANCE FOR 50p